

REL – 1.5 Te WLL - 800m & 2000m - Hydraulic Winch



TECHNICAL SPECIFICATION

Weight without cable (Kg)	Cable diameter (mm)	Capacity (m)	Line speed (m/min)		WLL (Kg)		Brake (Kg) Minimum 1.5 WLL	
			First Layer	Top Layer	First Layer	Top Layer	First Layer	Top Layer
4200	12	800	35	60	1500	1080	4100	2960
	11.4	2000	42	60	1500	890	4100	2440
Winch Hydraulic Drive Supply Required		200 bar 90 l/min per winch drum			Cable Lead-off Angle		Min + 0° Max + 45° Vertical plane	
Level Wind Hydraulic Drive Supply Required		200 bar 50 l/min			Frame details		Crash frame with guards, fork lifting pockets and certified lifting lugs	
Local Proportional Control		Only for manual level wind adjustment			Winch drum dimensions		Drum core Ø 425 mm, Drum Length 804mm, Flange Ø 650 mm and Drum core Ø 460 mm, Drum Length 804mm, Flange Ø 850 mm	
Level wind		Right Angled - hydraulic driven, automatic pulse driven level wind with manual adjustment			Drum details		Lebus shell drums; 12mm wire is stored in 8 lays with 66 turns per lay. 11.4 wire is stored in 15 lays with 70 turns per lay	
Dimensions (LxWxH) Footprint		2764 x 1131 x 2682 mm 2020 x 1050 mm, 4693 x 3409 mm platforms deployed			Cable		12mm Steel wire 11.4mm Rochester A 302799	
Slip ring		Designed to accept Trolex 4845-4 or similar not within scope of supply			Hydraulic Ports		P G1/2" BSP, T G3/4" BSP, D G1/2" BSP, A & B G3/4" BSP	

Principle of Operation:

Each winch drum is independent and mounted one above the other and are driven directly from a SAI gearbox, hydraulic motor and load valve combination. The brake, being failsafe, always defaults to on should, for any reason, electrical supply is lost or the control joystick is in its centre position. The non-drive side housings the bearings and the lower drum a slipping.

The 90 degree right angled hydraulic driven Level wind is coupled with a dual sheave, PLC controlled and is automatic with a manual override via a local proportional valve. The lower sheave can be swung down to enable easy reconfiguration between the different cable diameters as required. The Level wind is adjusted via the HMI during reconfiguration between the different cable diameters

HMI displays cable/wire tension and line measurement via a load pin within the level wind sheave.

The winch is supplied with the following:

- 1 Set - sacrificial steel feet/mounting plates for mounting at ship
- Marine grade paint system (Details can be supplied on application)
- 1 Off – Winch running flashing lights and/or Klaxon
- 1 Set - Master Links and Shackles or a 4 leg lifting sling and shackles
- 12 Month Warranty
- Detachable and foldable maintenance platforms
- Canvas Cover for transport and storage
- Operation and Maintenance Manual in Electronic Format
- Remote HMI Display

Optional extras: - please note these are not in the scope of supply but can be offered at extra cost.

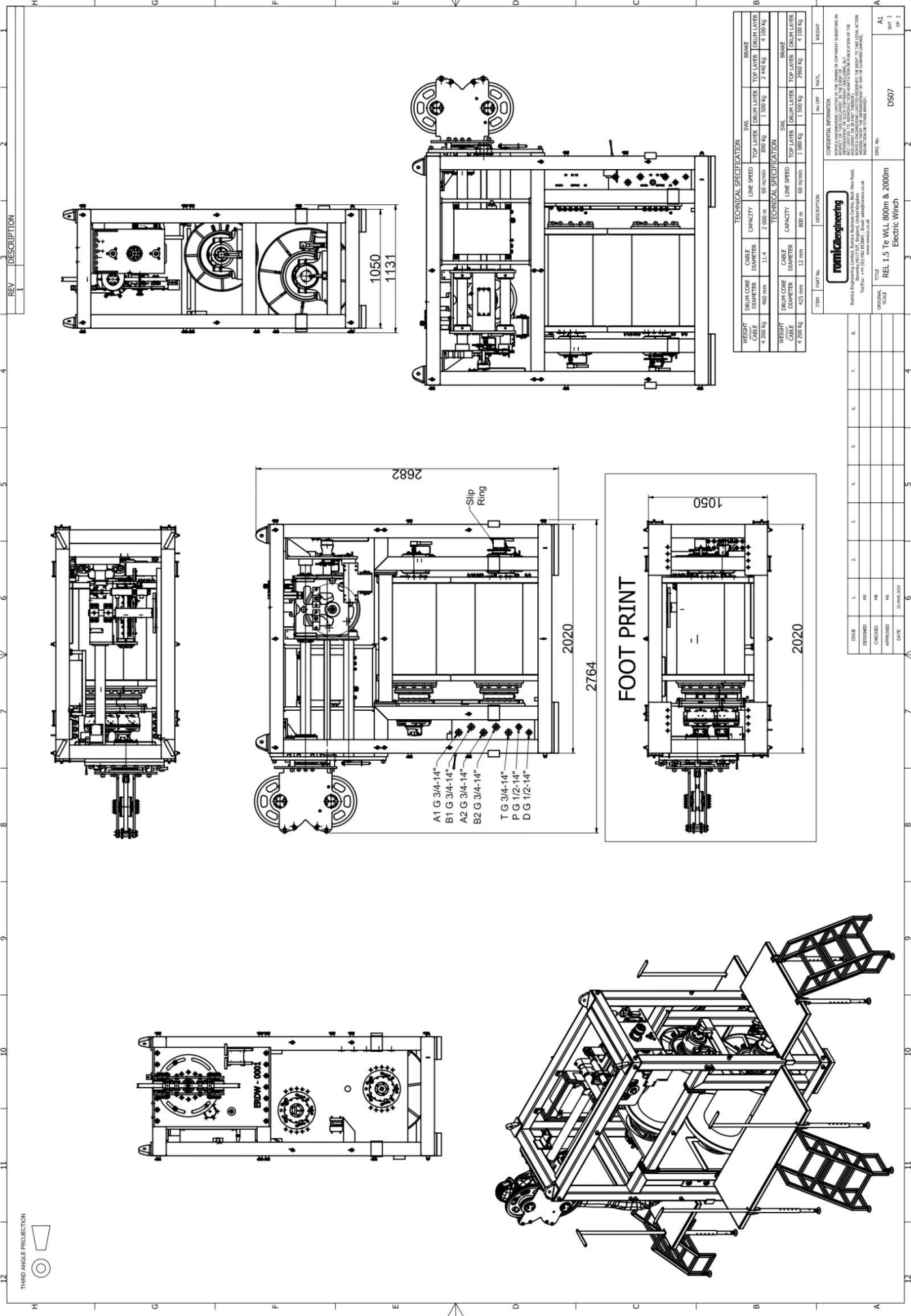
- 1 Off – Slip Ring details to be supplied with order
- 1 Off – Full Spares Kit
- 1 Off – Extended Warranty
- 1 Off – Spare Programmed SD Card for level wind control.
- 1 Set – Spare sacrificial feet/mounting plates
- Remote Control wired or wireless



Romica Engineering Ltd (UK)

Romica Business Centre,
Beck View Road, Grovehill Road
Beverley, HU17 0JT, United Kingdom
P: (+44) 148 285 3884
F: (+44) 148 285 3884
www: <http://romica.co.uk/>





REV	DESCRIPTION

TECHNICAL SPECIFICATION		SWL		BRAKE	
WEIGHT	CAPACITY	LINE SPEED	TOP LAYER	ENLARG LAYER	ENLARG LAYER
4 200 kg	2 000 m	60 m/min	800 kg	1 500 kg	2 400 kg
4 200 kg	2 000 m	60 m/min	1 000 kg	1 500 kg	2 400 kg

TECHNICAL SPECIFICATION		SWL		BRAKE	
WEIGHT	CAPACITY	LINE SPEED	TOP LAYER	ENLARG LAYER	ENLARG LAYER
4 200 kg	2 000 m	60 m/min	1 000 kg	1 500 kg	2 400 kg
4 200 kg	2 000 m	60 m/min	1 000 kg	1 500 kg	2 400 kg

ISSUE	1.	2.	3.	4.	5.	6.	7.	8.
DESIGNED	HS							
CHECKED	HS							
APPROVED	HS							
DATE	26.04.2019							

COMPANY INFORMATION		PROJECT	
runnicke engineering Runnicke Engineering Limited, 1000 Old Road, Broomfield, Essex, UK Tel: +44 (0) 202 268800, Email: sales@runnicke.co.uk www.runnicke.co.uk		DRAWING NO: D507 SHEET 1 OF 1	

TITLE: REL 1.5 Te WLL 800m & 2000m Electric Winch